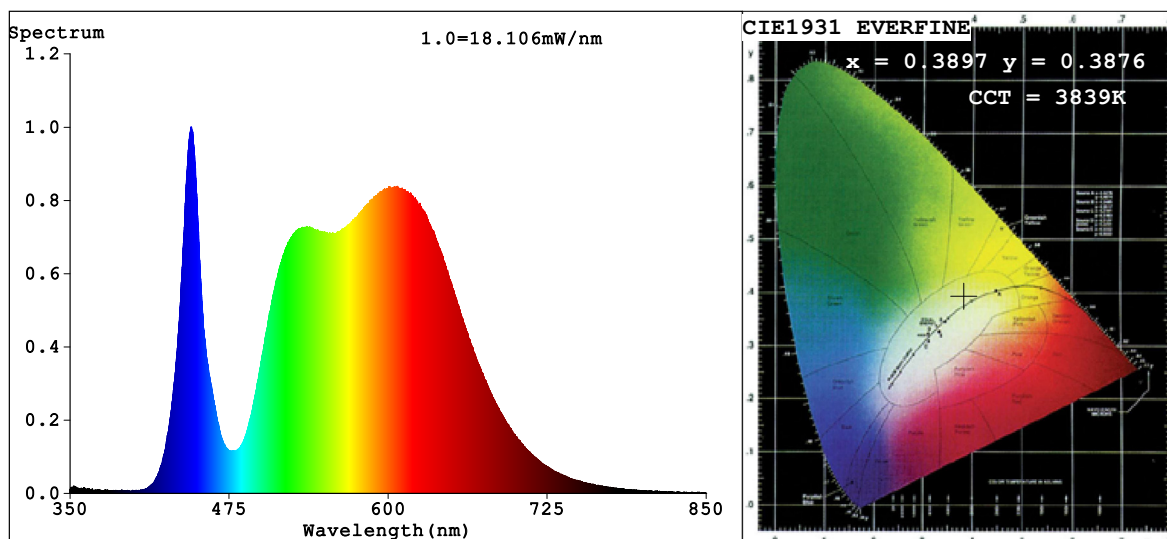


## Spectrum Test Report



### Color Parameters:

Chromaticity Coordinate:  $x=0.3897$   $y=0.3876$   $u'=0.2269$   $v'=0.5076$   
 CCT=3839K (Duv=0.0024) Dominant WL:Ld =578.5nm Purity=33.3%  
 Ratio:R=19.4% G=78.2% B=2.4%; Peak WL:Lp=445.3nm FWHM=17.7nm  
 Render Index:Ra=84.3 CRI=78.8 TM30:Rf=83 Rg=101  
 R1 =86 R2 =86 R3 =85 R4 =86 R5 =85 R6 =81 R7 =88  
 R8 =77 R9 =36 R10=67 R11=88 R12=62 R13=85 R14=91 R15=81

### Photo Parameters:

Flux = 914.1 lm Eff. : 79.89 lm/W Fe = 2.857 W

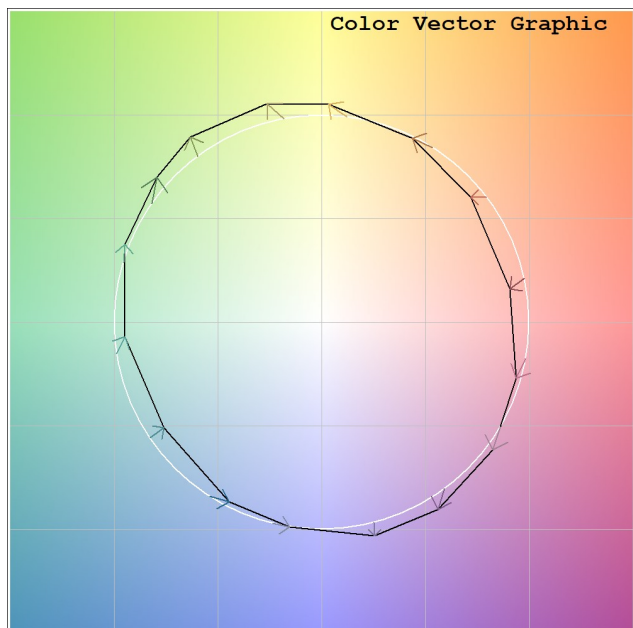
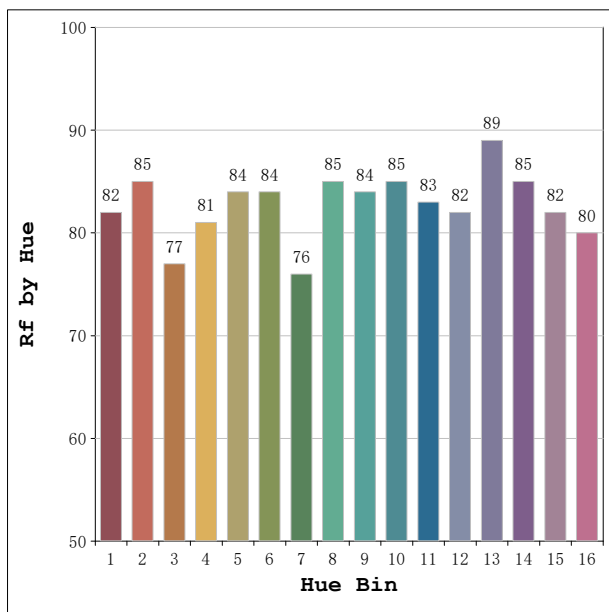
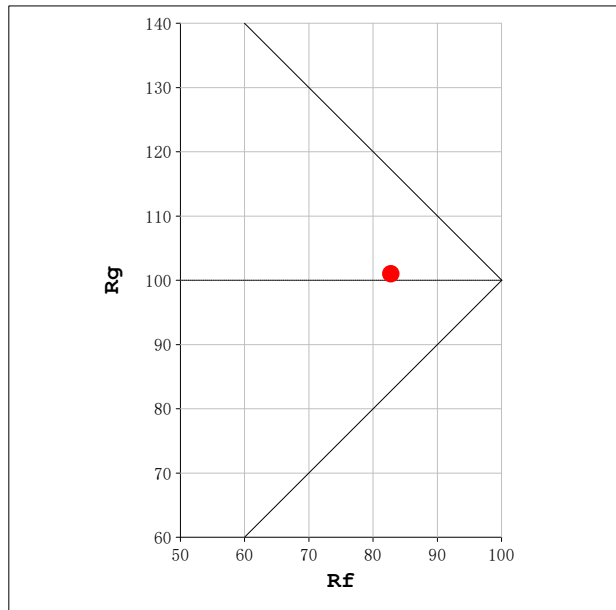
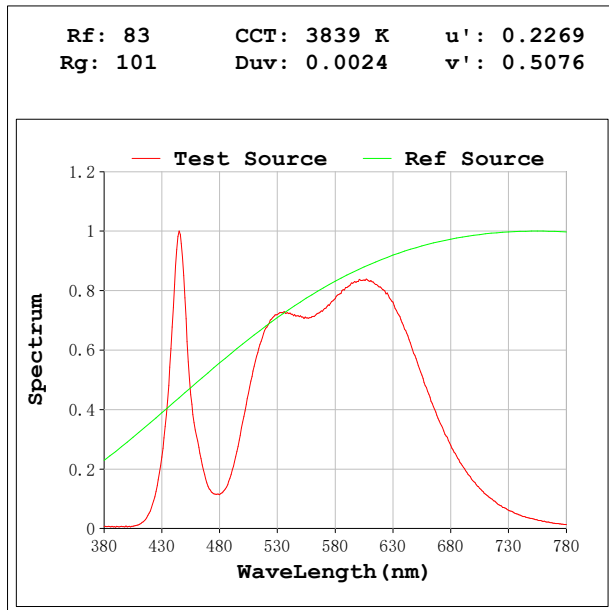
### Electrical parameters:

V = 230.04 V I = 0.05489 A P = 11.44 W PF = 0.9061

Status: Integral T = 1250 ms Ip = 35590 (54%)

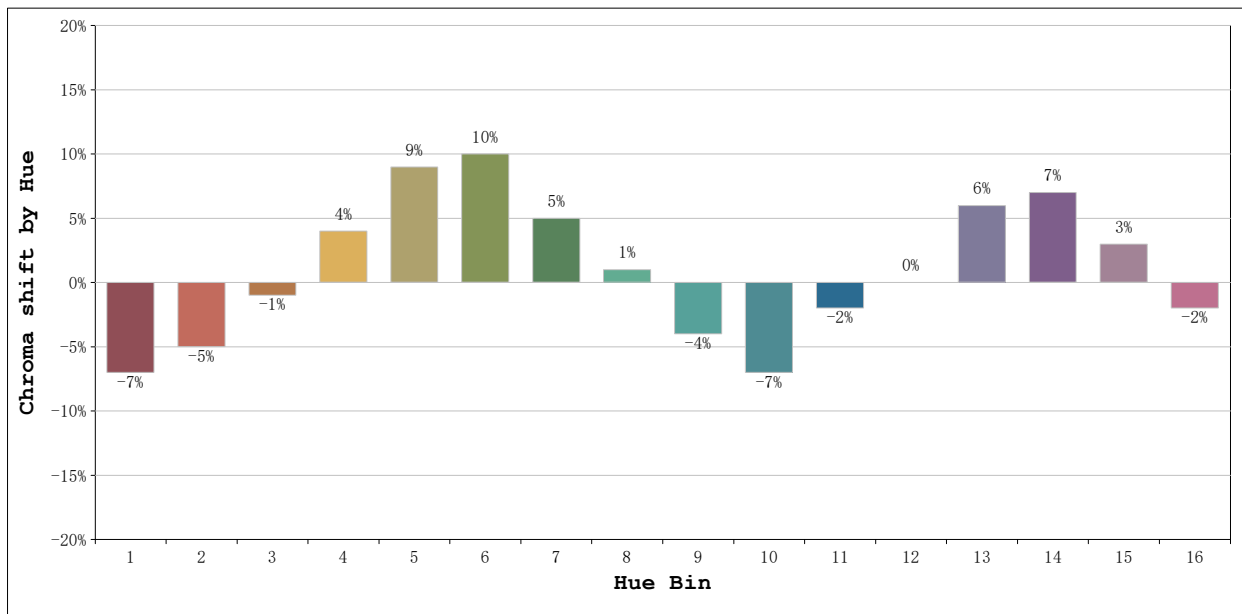
Model:Ecoled Infinity Cob  
 Tester:Sergio Carneros  
 Temperature:20Deg  
 Manufacturer:Luz Negra

Number: 34.267 Roll to Roll  
 Date:2026-03-25 09:46:46  
 Humidity:50%  
 Remarks:100cm de tira flexible



Model:Ecoled Infinity Cob  
 Tester:Sergio Carneros  
 Temperature:20Deg  
 Manufacturer:Luz Negra

Number: 34.267 Roll to Roll  
 Date:2026-03-25 09:46:46  
 Humidity:50%  
 Remarks:100cm de tira flexible



			Graphic shift(%)	
Hue Bin	Hue Angle	Rf	Chroma	Hue
1	0.0° - 22.5°	82	-7	-3
2	22.5° - 45.0°	85	-5	4
3	45.0° - 67.5°	77	-1	11
4	67.5° - 90.0°	81	4	10
5	90.0° - 112.5°	84	9	7
6	112.5° - 135.0°	84	10	-1
7	135.0° - 157.5°	76	5	-11
8	157.5° - 180.0°	85	1	-8
9	180.0° - 202.5°	84	-4	-6
10	202.5° - 225.0°	85	-7	0
11	225.0° - 247.5°	83	-2	10
12	247.5° - 270.0°	82	0	8
13	270.0° - 292.5°	89	6	0
14	292.5° - 315.0°	85	7	-7
15	315.0° - 337.5°	82	3	-10
16	337.5° - 360.0°	80	-2	-9

**Model:**Ecoled Infinity Cob  
**Tester:**Sergio Carneros  
**Temperature:**20Deg  
**Manufacturer:**Luz Negra

**Number:** 34.267 Roll to Roll  
**Date:**2026-03-25 09:46:46  
**Humidity:**50%  
**Remarks:**100cm de tira flexible